

PART OF THE NE.1/4, OF THE SW.1/4, OF SEC. 27, T.6N., R.1W., S.L.B. & M.

95

# NOB HILL ADDITION

BLOCKS 8 & 9

TAXING UNIT: 25

IN OGDEN CITY

SEE PAGE 117

SEE PAGE 118

SCALE 1" = 50'

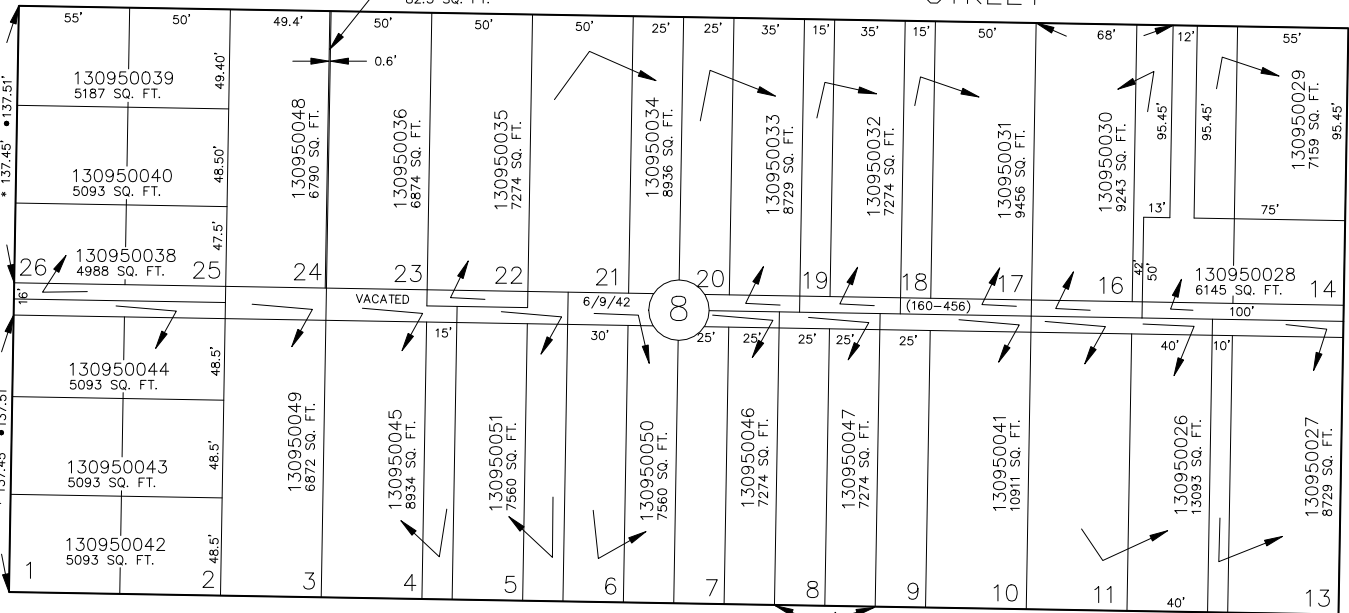
22ND STREET

SEE BOOK 2, PAGE 67

AVENUE

AVENUE

SEE PAGE 94



S 89°02' E

SWAN STREET

STREET

N 0°58' E

POLK

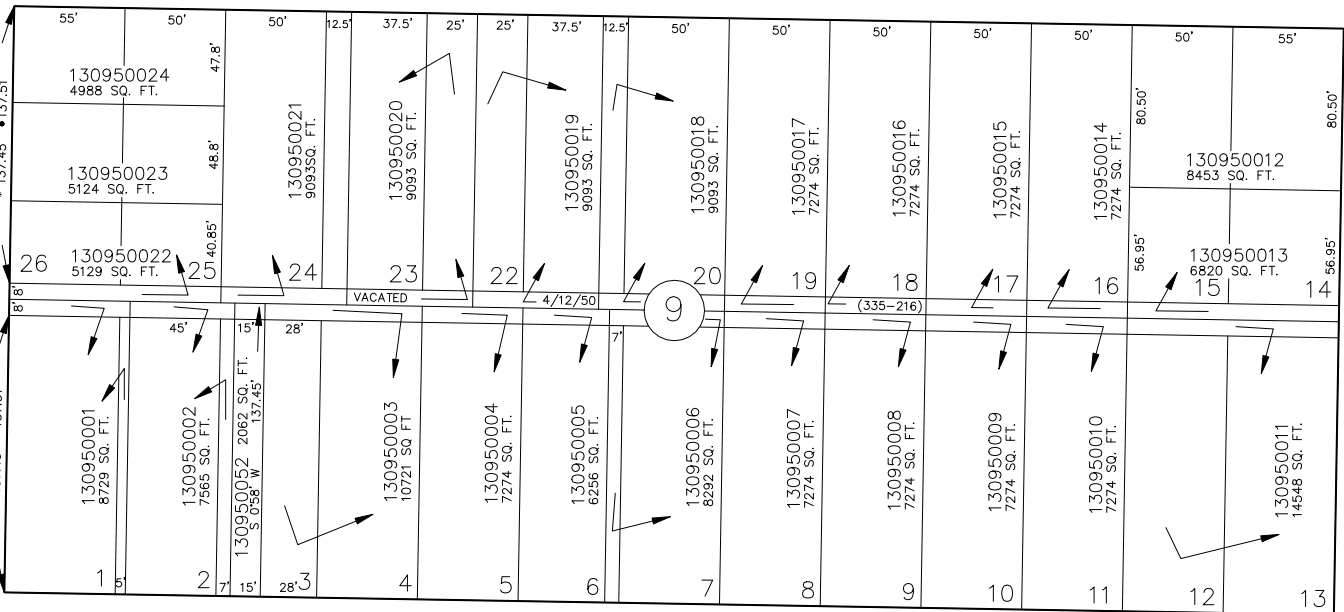
N 0°58' E

SEE PAGE 97

POLK

TAYLOR

SEE PAGE 93



S 89°02' E

23RD STREET

STREET

FOR COMPLETE ENG DATA SEE ORIGINAL DEDICATION PLAT IN BOOK 6, PAGE 1 OF RECORDS.

13

• OGDEN CITY ENG. DEPT. PLATS  
• ORIG. DED. PLAT

SEE PAGE 96

JPS 3-94